



Discover the Opportunities at 250 Tower

*\$28.00 5th–13th Floors
Per SF/Year/Full Service*

LEASING INQUIRIES

Trigger Reital

t 801-578-5507
trigger.reital@nmrk.com

Jeff Rossi

t 801-578-5508
jeff.rossi@nmrk.com

NEWMARK

UNICO

Welcome to 250 Tower

114,291 contiguous RSF available
 136,209 total RSF available



Inviting and Inspiring



Fitwel[®]
 Viral Response
 Certified

LEASING INCENTIVES

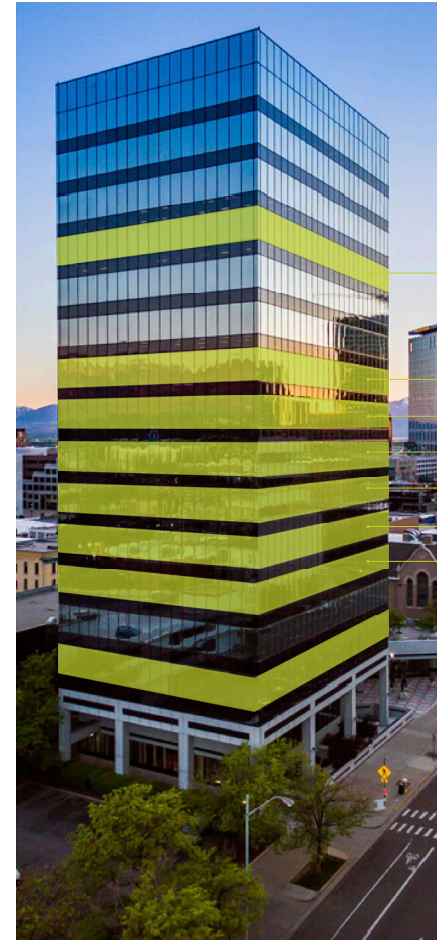
- One month of free rent per year leased

PROJECT HIGHLIGHTS

- Large floor plates, with multiple full floor opportunities
- LEED certified: Gold
- 2/1,000 parking available
- On-site fitness center
- Showers and locker room
- Outdoor patio with indoor/outdoor kitchen
- 24-hour, on-site manned security
- Food trucks & the best amenities in downtown Salt Lake City
- Secure bicycle storage
- Fitwel Viral Response certified - creating healthy and safe environments for all building occupants

Lease Availability

A truly unique urban location.



FLOOR 13	13,006 RSF \$2S.cc/RSF
FLOOR 10	±8,912 RSF \$2S.cc/RSF
FLOOR 9	21,450 RSF \$2S.cc/RSF
FLOOR 8	23,797 RSF \$2S.cc/RSF
FLOOR 7	23,786 RSF \$2S.cc/RSF
FLOOR 6	21,450 RSF \$2S.cc/RSF
FLOOR 5	23,797 RSF \$2S.cc/RSF

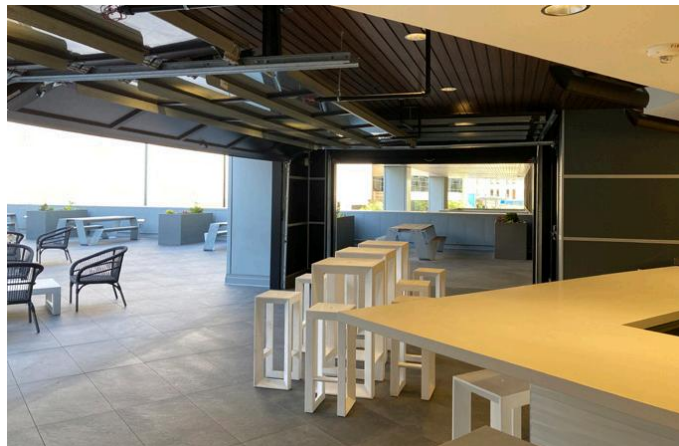
Available Opportunity

Designed with the Modern Employee in Mind

250 Tower has the space and the amenities to meet the evolution of the modern work force. Enjoy your lunch on the patio or unwind with coworkers by the firepit.



INDOOR/OUTDOOR PATIO



FITNESS CENTER



Fit 250

Fully-equipped fitness center, yoga studio and cardio equipment on-site. Locker rooms with showers, and towel service included.



Multi-family Residential



In the Neighborhood

More Choices at your Convenience

Grab a coffee, take a call on the patio, ride your bike to work, run CityCreek at lunch, or grab a quick workout during a break. Be here in the middle of it all.

70+

RESTAURANTS WITHIN WALKING DISTANCE

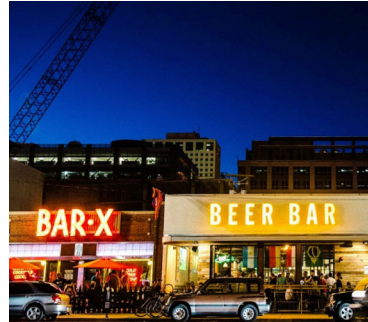
City Creek Center Restaurants:

- Blue Lemon
- Bocata
- Brio Italian Grille
- Cafe Rio
- Chick-fil-a
- Costa Vida
- Great Steak
- J Dawgs
- Jeeva's Greek Cafe
- Jonny Rockets
- Kneaders
- McDonald's
- Nordstrom eBar
- Nordstrom Grill
- Osaka Japan
- Rocky Mtn Chocolate Factory
- Roxberry
- Sbarro
- Subway
- Red Iguana
- Cheesecake Factory
- Uncle Shark's Poke Bar
- Tibet Bowl & Sushi
- Uncle Shark's Poke Bar
- Vitality Bowls
- Zeppe's
- Zimbu



Everything in Reach

Select Restaurants within
a Four Minute Walk



Everything in Reach

Restaurants within Walking Distance

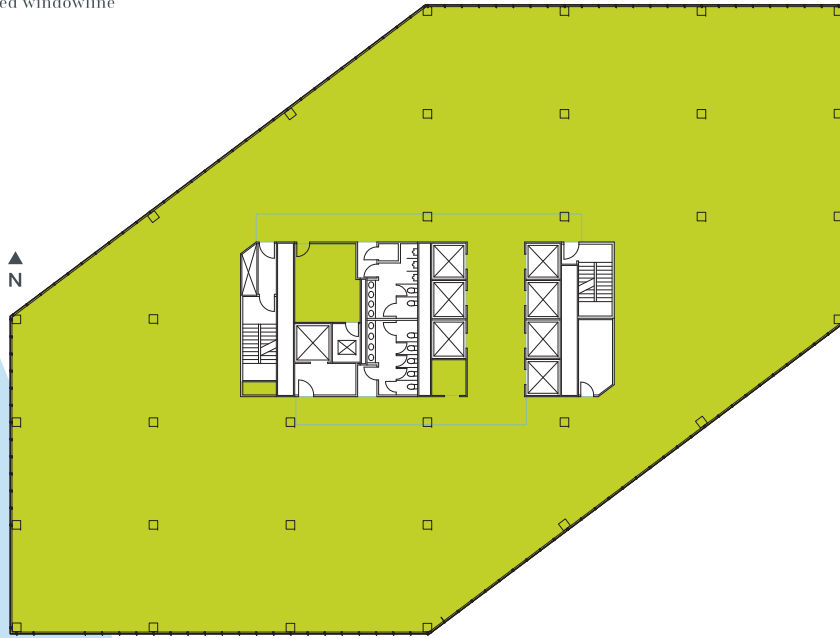
- | | | |
|----------------------------|----------------------------|-------------------------|
| Apollo Burger | From Scratch | Pleiku |
| Arepas | Garden Cafe | Post Office Place |
| Argentina's Best Empanadas | Ginger Street | Pretty Bird Chicken |
| Bambara | Good Burger | Pulp Lifestyle Kitchen |
| Bangkok Terrace | Gourmandise | Ramen 930 |
| Beerhive Pub | Greek Souvlaki | Ramen Bar |
| Benihana | Great Steak & Potato Co. | Red Lotus Bistro |
| Blue Iguana | Himalayan Kitchen | Richs Burgers & Grub |
| Blue Lemon | Honest Eatery | Ruths Chris |
| Blue Marlin | Itto Sushi | Salt Stone |
| Bocata | J Dawgs | Santo Taco |
| Bodega | Jimmy Johns | Sbarro Pizza |
| Boltcutter | Johnny Rockets | Sicilia Pizza & Kitchen |
| Bourbon House | Kaze | Siegfrieds |
| Brio | Kneaders | Sonoma Grill & Wine Bar |
| Broadway Deli | Krua Thai | Spencers |
| Cafe Rio | Les Banh Mi | Spitz |
| Cancun Café | Les Madeleines | Stanza Italian Bistro |
| Charlie Chows Dragon Grill | Lion House | Stoneground |
| Cheesecake Factory | Maize | Subway |
| Chettinad House | Mali Thai | Taco Taco |
| Chick-fil-A | Market Street Grill | Takashi |
| Christophers | Market Street Oyster Bar | Taqueria 27 |
| Copper Onion | Maxwells East Coast Eatery | Taste of Red Iguana |
| Costa Vida | McDonalds | The Garden |
| Crown Burger | Melting Pot | The Robins Nest |
| Cupbop | Michelangelos on Main | The Roof |
| Current Fish and Oyster | Nauvoo Cafe | Tin Angel |
| Curry Up Now | Nordstrom Grill | Toasters Deli |
| Doki Doki | Nostalgia Cafe | Trofi |
| DP Cheesesteaks | O'Shucks Bar & Grill | Turmeric |
| Elevations | Oasis Cafe | Vitality Bowls |
| Este Pizzeria | Oquirrh | White Horse |
| Eva | Osaka Japan | Yoko Ramen |
| Free Wheeler Pizza | Other Place Restaurant | Yoshi's Japanese Grill |
| FreshFin | Padelis Street Greek | Zimbu |
| | Pie Hole | |

Everything in Reach

Floor 5

23,797 RSF

- Full floor
- Light-filled flexible floor plate
- Increased windowline

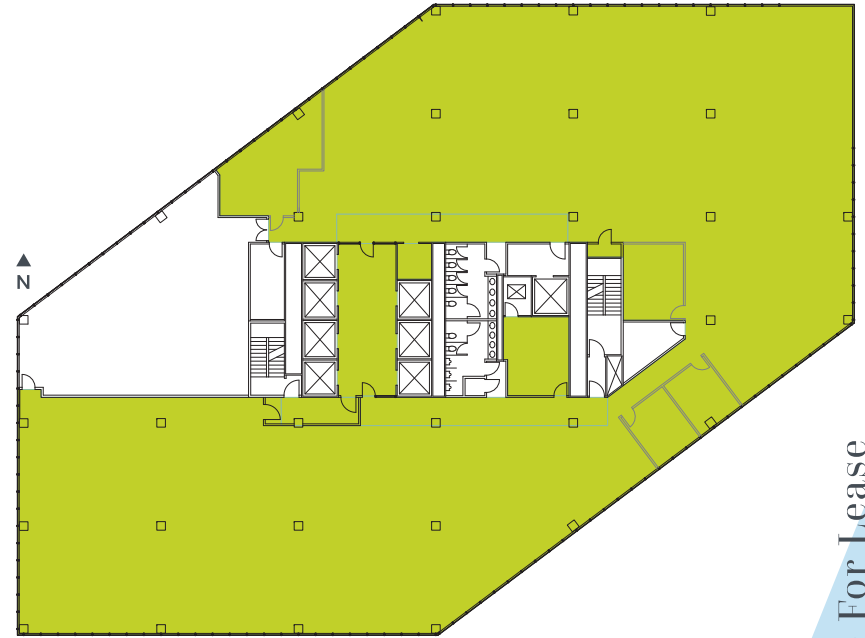


Space For Lease

Floor 6

21,450 RSF

- Full floor

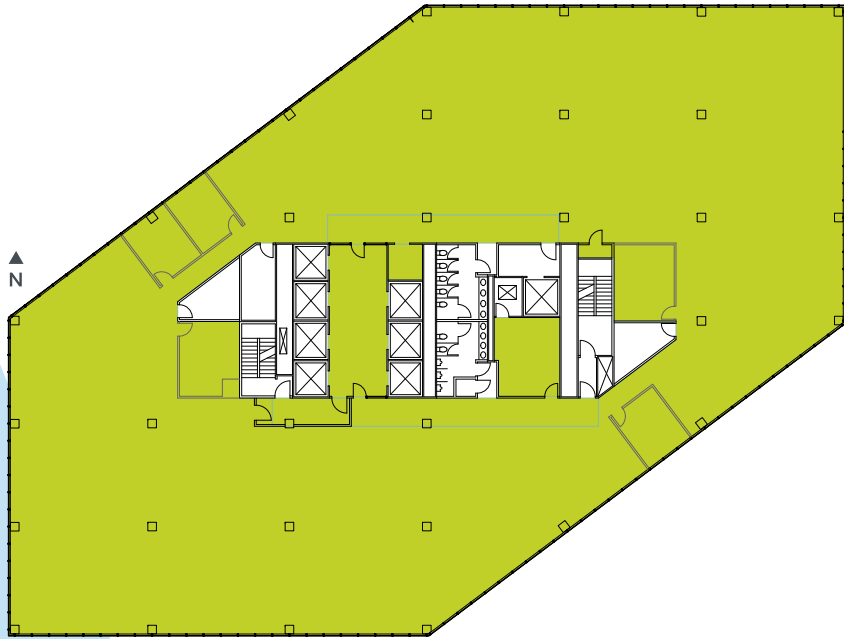


Space For Lease

Floor **7**

23,786 RSF

- Full floor

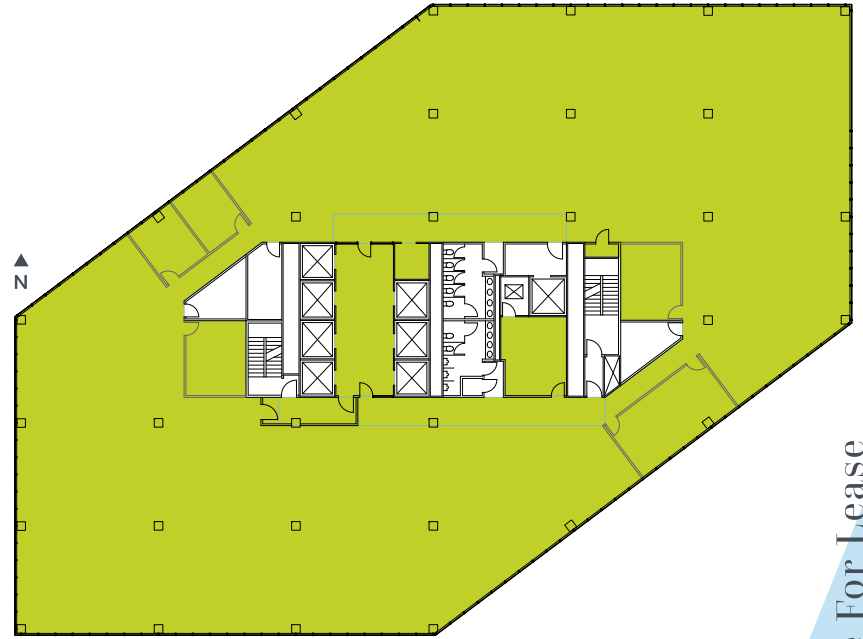


Space For Lease

Floor **8**

23,797 RSF

- Full floor

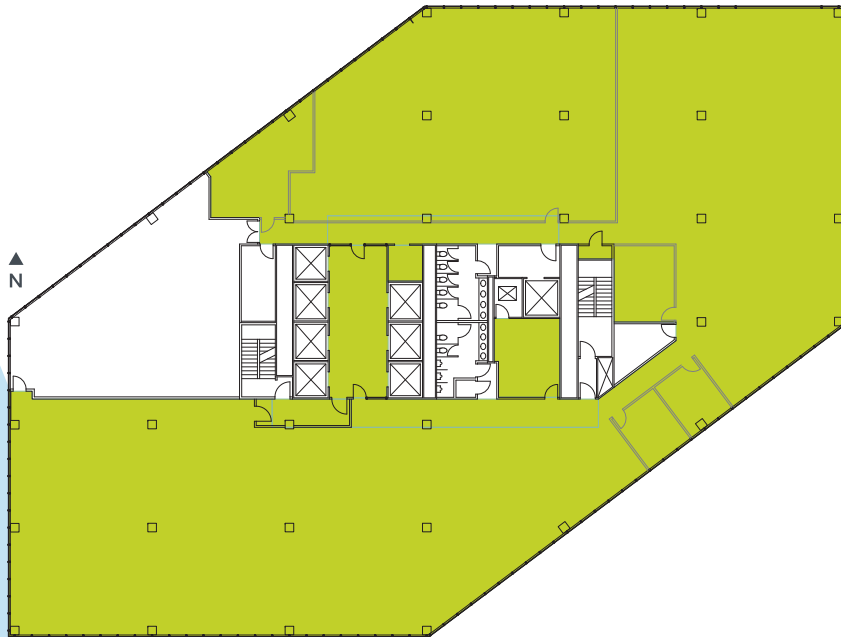


Space For Lease

Floor 9

21,450 RSF

- Full floor



Space For Lease

Floor 10

8,912 RSF



Space For Lease

Floor 13

13,006 RSF

- Light-filled flexible floor plate
- Increased windowline



Space For Lease



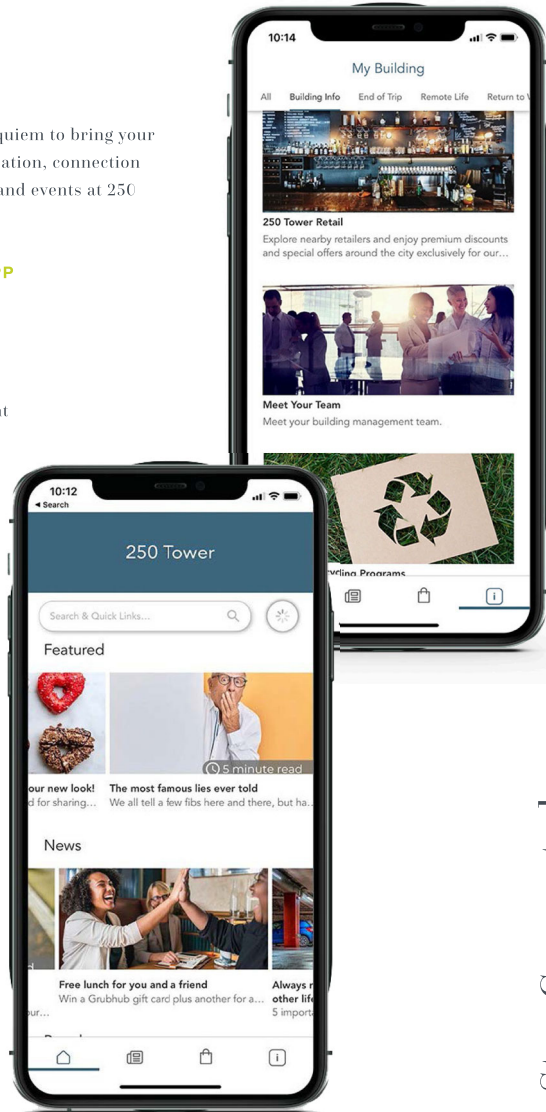
UNICO CONNECT APP

Keeping you informed with Unico Connect

Unico Properties is proud to partner with Equiem to bring your employees an online platform for communication, connection and staying up-to-date with the latest news and events at 250 Tower.

DOWNLOAD THE UNICO CONNECT APP

- Building announcements
- On-site services
- Tenant appreciation events
- Security updates
- Connect directly with building management
- Book amenity spaces



Stay Connected





250
TOWER

250 E. 200 S.
SALT LAKE CITY, UT 84111

LEASING INQUIRIES

Trigger Reital

t 801-578-5507
trigger.reital@nmrk.com

Jeff Rossi

t 801-578-5508
jeff.rossi@nmrk.com

NEWMARK



UNICO®

The information contained herein has been obtained from sources deemed reliable but has not been verified and no guarantee, warranty or representation, either express or implied, is made with respect to such information. Terms of sale or lease and availability are subject to change or withdrawal without notice.