

More Choices at your Convenience

Grab a coffee, take a call on the patio, ride your bike to work, run CityCreek at lunch, or grab a quick workout during a break. Be here in the middle of it all.

70+

**RESTAURANTS
WITHIN WALKING
DISTANCE**

City Creek Center Restaurants:

- Blue Lemon
- Bocata
- Brio
- Chick-fil-a
- CoreLife
- Costa Vida
- Great Steak
- Jeeva's Greek Cafe
- Jonny Rockets
- Kneaders
- McDonald's
- Nordstrom eBar
- Nordstrom Grill
- Osaka Japan
- Rocky Mtn Chocolate Factory
- Roxberry
- Sbarro
- Subway
- Red Iguana
- Cheesecake Factory
- Tibet Bowl & Sushi
- Uncle Sharkii Poke Bar
- Vitality Bowls
- Zeppu's
- Zimbu



Casey Mills, SIOR, CCIM
t 801-578-5556
casey.mills@nmrk.com

Derek Sawaya
t 801-746-4730
derek.sawaya@nmrk.com

Everything in Reach



Discover the Opportunities at 250 Tower

LEASING INQUIRIES

Casey Mills, SIOR, CCIM
t 801-578-5556
casey.mills@nmrk.com

Derek Sawaya
t 801-746-4730
derek.sawaya@nmrk.com

NEWMARK

UNICO

Welcome to 250 Tower

250 Tower is a venerable piece of the Salt Lake City skyline that has been reinvented for the 21st century.

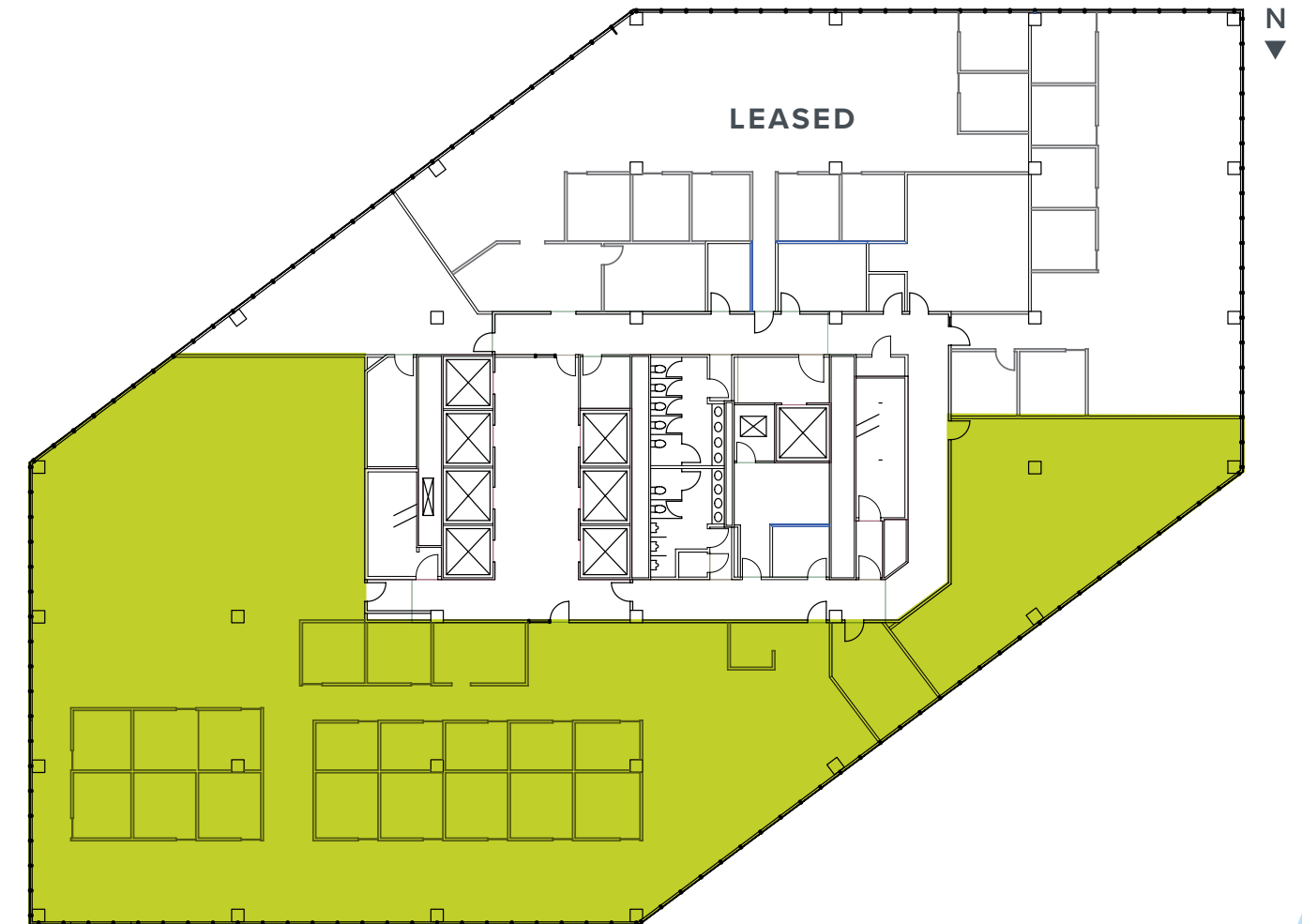
From market ready spec suites as small as 2,500 SF, to 27K SF floorplates, to multiple contiguous full floors, 250 Tower is ready to serve the needs of modern tenants looking for differentiated office space in the heart of Utah's capital city.



Floor 13

13,500 RSF

- Light-filled flexible floor plate



Inviting and Inspiring



Fitwel®
Viral Response
Certified

PROJECT HIGHLIGHTS

- \$10.00/SF/year tenant improvement allowance
- \$23.00/SF rate for third floor
- One month of free rent per year leased
- Large floor plates, with multiple full floor opportunities
- LEED certified: Gold
- 3/1,000 parking available (1.75 on-site)
- On-site fitness center
- Showers and locker room
- Outdoor patio with indoor/outdoor kitchen
- 24-hour, on-site manned security
- Food trucks & the best amenities in downtown Salt Lake City
- Secure bicycle storage
- Fitwel Viral Response certified - creating healthy and safe environments for all building occupants

Space For Lease

*Tenant improvement allowance does not include the speculative suite(s) on the third floor. Limited to the first 10 years of the lease.
 **Terms outlined above subject to landlord approval of tenant and tenant's financials
 ***For deals signed prior to March 31, 2022